



**29 Rosebery Avenue, Boston, PE21 7QF**  
**Asking price £219,500**



## 29 Rosebery Avenue, Boston, PE21 7QF

Charming Three-Bedroom Home in a Quiet Location – Close to Boston Town Centre

Vendoors are delighted to present this three-bedroom home, ideally situated in a peaceful residential area just one mile from Boston town centre. This well-maintained property offers generous living space across two floors, with modern amenities and a functional layout that is perfect for families or professionals. The ground floor features two inviting living areas, a well-equipped kitchen, and a convenient shower room. Upstairs, three comfortable bedrooms and a family bathroom provide ample space for relaxation. Externally, the property benefits from a driveway to the side, as well as a garden to the side and rear, offering outdoor space for entertaining or leisure.

This charming home combines comfort, practicality, and a fantastic location, making it a must-see for prospective buyers.





**Living Room**  
14'0" x 12'4" (4.29m x 3.78m)



Spacious and bright with a bay window.

**Dining Room**  
11'10" x 10'2" (3.61m x 3.11m)



Ideal for family meals or entertaining.

**Kitchen**  
15'2" x 6'8" (4.64m x 2.05m)



Fully fitted with modern appliances

**Shower Room**  
5'4" x 5'11" (1.65m x 1.82m)



Convenient downstairs shower room.

**Hallway**



Welcoming entrance with staircase leading to the first floor.

**Bedroom 1**  
11'11" x 11'5" (3.65m x 3.50m)



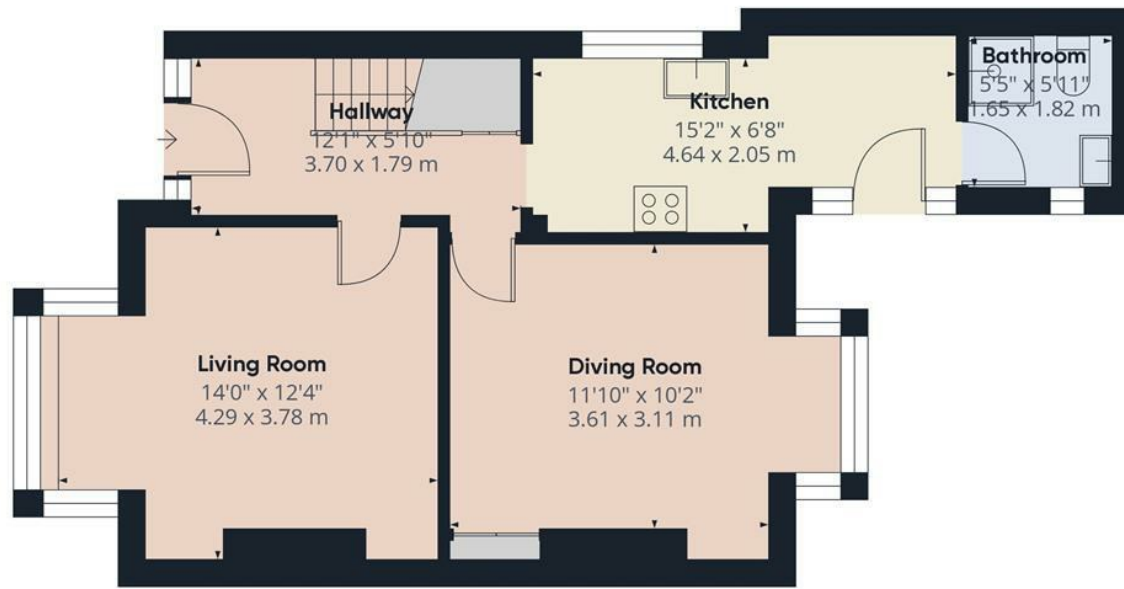
Spacious main bedroom.











Ground Floor



Floor 1

Approximate total area<sup>(1)</sup>

898.77 ft<sup>2</sup>

83.5 m<sup>2</sup>

(1) Excluding balconies and terraces.

While every attempt has been made to ensure accuracy, all measurements are approximate, not to scale. This floor plan is for illustrative purposes only.

Calculations were based on RICS IPMS 3C standard. Please note that calculations were adjusted by a third party and therefore may not comply with RICS IPMS 3C.

GIRAFFE360